

Customer :

customer

Customer part :

customer part

Comment :

Comment

S1=0.55

S2=0.77

Tmax=315

Tp S2=354.0

PI=0.42

HI=30

Sample =2920.7

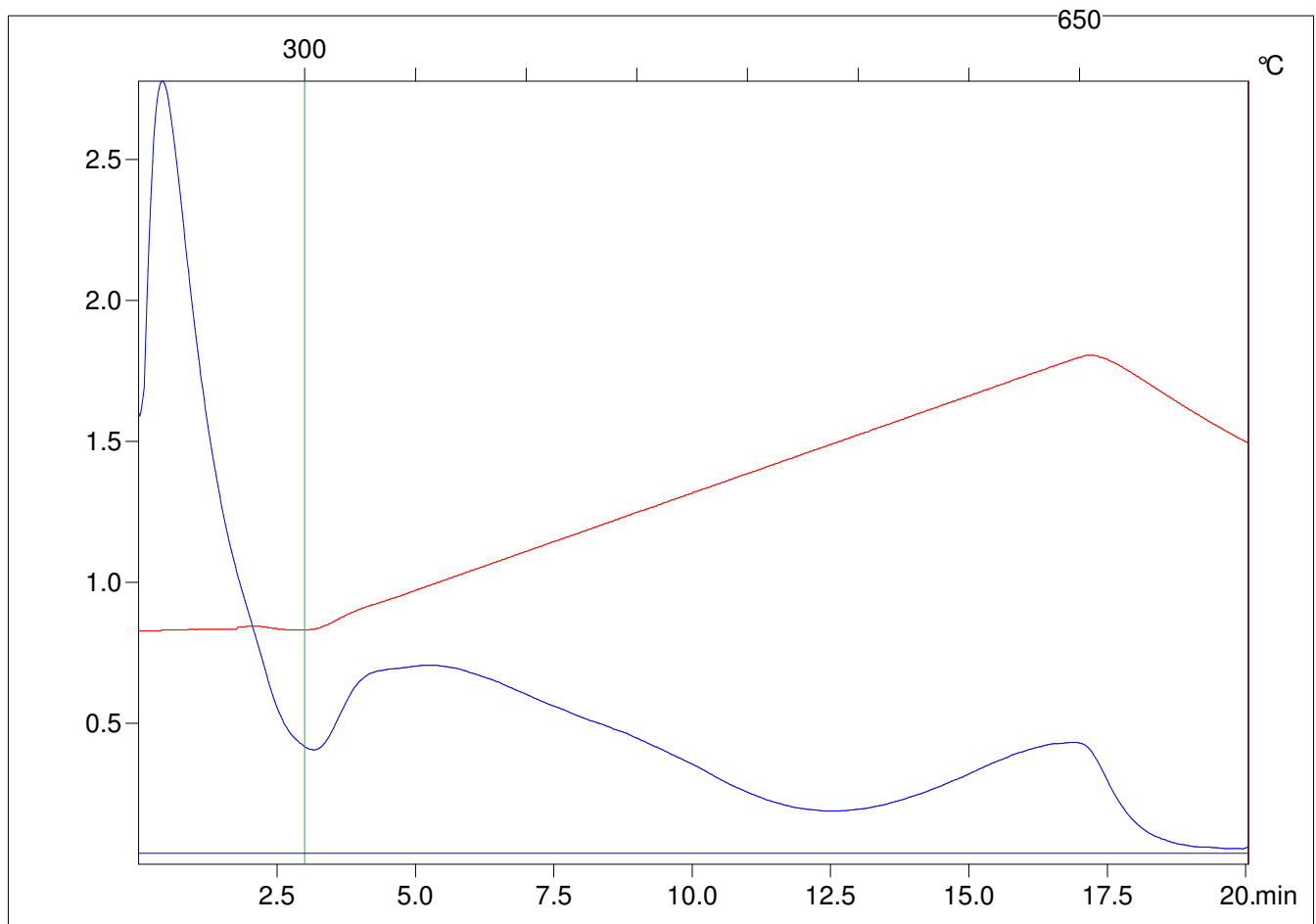
Method =Bulk Rock

Cycle=Basic

KFID(10*9)=1550

Qty =70.1

TOC=2.6



C:\VINC\PK130315\PK019.R00 : FID pyrolysis graphic

State

Pyro Status

Oxi Status